



Heavy duty forestry mulcher for tractors between 200 and 300 HP.

Equipped with swinging hammers for the cleaning of brushwood, which favors the growth of trees, the reclamation of land, the maintenance and restoration of banks, the maintenance of areas under power lines, forestry roads, fire blocking lines.

Equipped with rotor of fixed tooth with system FIXE TOP, for thick wood and stumps. This mulcher integrates all the necessary options for an optimal forest work.

CHARACTERISTICS

- Steel-plate chassis, thickness 12 mm.
- Rotor POLSER + of 725 mm of diameter.
- Gearbox with RAIL BOX System with freewheel.
- 2 x 4 XPC side belt transmission.
- Swinging hammers or fixed tooth carbide.
- Supports of bearing rotor in steel.
- Oscillating bearings of double row of rollers.
- Double front safety chains.
- PTO 1.000 rpm.
- Steel counter hammers.
- Skid shoes adjustable.
- System antiwire in rotor.
- Internal reinforcements in chassis.
- Hydraulic rear hood.
- Compact drive cover.
- Pushing frame.
- Pulleys of diameter 350 mm.
- Model built under EC Normative.
- Safety indicators visible to personnel.



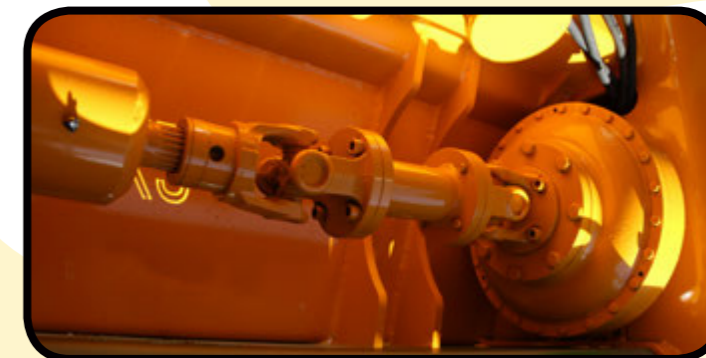
Pushing frame
Hydraulic rear hood
System antiwire in rotor



MODEL	mm	KW-HP	mm	mm	mm	KG	Nº BELTS TYPE	Diagram Dimensions						
								A mm	A in	B mm	B in	C mm	C in	
T-2000	2000	132 - 180 184 - 250	36	48	24	4000	2 x 4 XPC	2457	97"	1710	67"	1850	73"	1000
T-2300	2300	154 - 210 184 - 250	48	56	28	4350	2 x 4 XPC	2690	109"	1710	67"	1850	73"	1000
T-2500	2500	177 - 240 184 - 250	48	82	42	4675	2 x 4 XPC	2960	117"	1710	67"	1850	73"	1000

OPTIONS

FIXE TOP System



- Torque converter

